

TITAN

WYE STRAINER • RAISED FACE FLANGED ENDS

Class 300 lb • Carbon Steel and Stainless Steel



2" YS 62-CS

Models: YS 62-CS
(Carbon Steel)

YS 62-SS
(Stainless Steel)

Size Range: 1/2" ~ 12"

WORKING PRESSURES & TEMPERATURE - NON-SHOCK

| ANSI 300 lb Class | YS 62-CS | YS 62-SS |
|--------------------------|------------------|-------------------|
| WOG (Water, Oil, Gas) | 740 PSI @ 100 °F | 720 PSI @ 100 °F |
| Saturated Steam | 300 PSI @ 420 °F | 300 PSI @ 420 °F |
| MAX Liquid | 400 PSI @ 800 °F | 350 PSI @ 1000 °F |

Features:

- SELF CLEANING TYPE
- PRECISION MACHINED SCREEN SEAT
- TAPPED NPT BLOW-OFF
- DRAIN/BLOW-OFF CONNECTION FURNISHED WITH PLUG STANDARD
- OPTIONAL COVER DESIGNS (SWING, CLAMP, HINGE TYPE)
- EPOXY PAINTING IS STANDARD ON ALL CARBON STEEL UNITS
- LARGE OPEN AREA - MINIMUM 2.5X LARGER THAN CORRESPONDING PIPE
- INLET AND OUTLET BOSSES ARE PROVIDED FOR GAUGE TAPPING
- HIGH TEMPERATURE COVER GASKET IS SET IN MACHINED COUNTER BORES
- STAINLESS STEEL STRAINERS DESIGNED WITH STAINLESS STEEL NUTS AND BOLTS
- BOLTED COVER FLANGE ALLOWS EASY REMOVAL OF SCREEN FOR CLEANING
ALSO HELPS TO ENSURE PROPER ALIGNMENT OF SCREEN DURING REASSEMBLE
- RAISED FACE FLANGES WITH BOLT HOLES EITHER SPOT FACED OR BACK FACED

*Ideal Design for Petrochemical and Industrial Applications
with Higher Pressure and Temperature Requirements.*



TITAN FLOW CONTROL
LUMBERTON, NC USA

WYE STRAINER

MODEL: YS 62-CS

MODEL: YS 62-SS

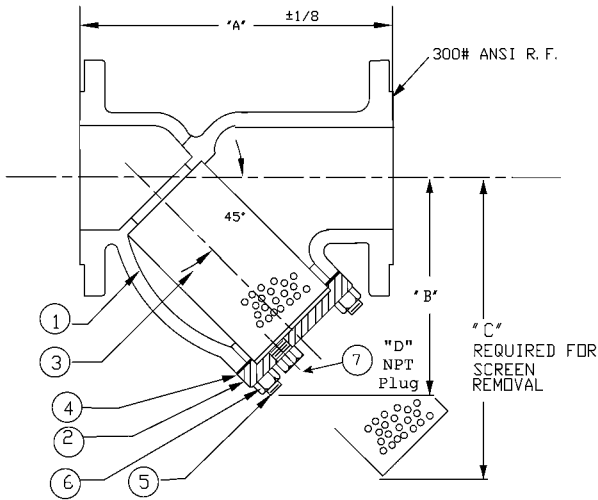
CARBON STEEL

STAINLESS STEEL

FLANGED - RAISED FACE

FLANGED - RAISED FACE

ANSI Class 300 lb



| BILL OF MATERIALS | | | |
|-------------------|---------|---|------------------------|
| No. | PART | YS 62-CS | YS 62-SS |
| 1 | Body | ASTM A216 Gr. WCB | ASTM A351 Gr. CF8M |
| 2 | Cover | ASTM A216 Gr. WCB | ASTM A351 Gr. CF8M |
| 3 | Screen* | 304 Stainless Steel | |
| 4 | Gasket* | 304 Stainless Steel Spiral Wound Non-Asbestos | |
| 5 | Studs | ASTM A193-B7 | ASTM A193 B8 T316SS |
| 6 | Nuts | ASTM A194-2H | ASTM A194 Gr. 8 T316SS |
| 7 | Plug | ASTM A105 | ASTM A182 F316 |

*Recommended spare parts

Notes:

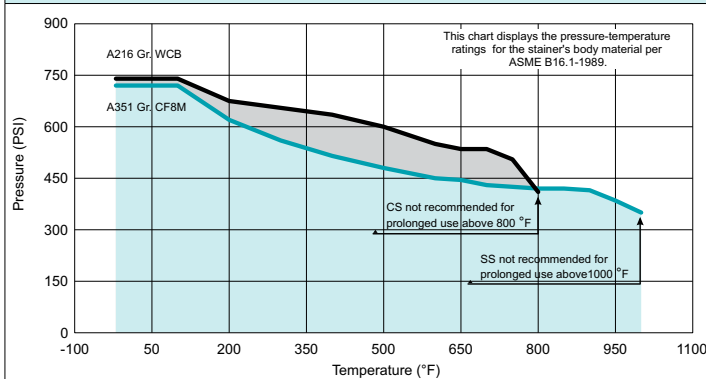
- A wide range of optional gasket materials available - C/F.
- Optional body materials available:
(LCB, WC6, WC9, 316L, Alloy 20, and Monel)
- Furnished with 1/16" raised face. Flange Finish: 125-250 AARH
- Gasket is encapsulated in machined recessed groove.

DIMENSIONS:

| SIZE | in | 1/2 | 3/4 | 1 | 1 1/4 | 1 1/2 | 2 | 2 1/2 | 3 | 4 | 5 | 6 | 8 | 10 | 12 |
|-----------------------------------|----------------|------|------|------|-------|-------|------|-------|-------|-------|-------|-------|-------|-------|-------|
| | mm | 15 | 20 | 25 | 32 | 40 | 50 | 65 | 80 | 100 | 125 | 150 | 200 | 250 | 300 |
| A DIMENSION FACE TO FACE | in | 6.62 | 8.31 | 8.31 | 10.12 | 10.25 | 9.62 | 10.62 | 12.00 | 14.50 | 19.31 | 19.31 | 23.37 | 27.37 | 32.00 |
| | mm | 169 | 212 | 212 | 258 | 261 | 245 | 270 | 305 | 369 | 491 | 491 | 594 | 696 | 813 |
| B DIMENSION CTR. LINE - BOTTOM | in | 3.50 | 3.75 | 3.75 | 5.50 | 5.50 | 5.25 | 6.50 | 7.00 | 8.25 | 11.25 | 13.50 | 15.50 | 18.50 | 21.75 |
| | mm | 89 | 96 | 96 | 140 | 140 | 134 | 166 | 178 | 210 | 286 | 343 | 394 | 470 | 553 |
| C DIMENSION SCREEN REMOVAL | in | 5.00 | 5.00 | 5.00 | 8.00 | 8.00 | 7.00 | 9.75 | 10.00 | 12.00 | 17.00 | 20.00 | 22.75 | 28.00 | 30.00 |
| | mm | 127 | 127 | 127 | 204 | 204 | 178 | 248 | 254 | 305 | 432 | 508 | 578 | 712 | 762 |
| D DIMENSION NPT BLOW-OFF | in | 3/8 | 1/2 | 1/2 | 1/2 | 1/2 | 1/2 | 1 | 1 | 1 1/2 | 2 | 2 | 2 | 2 | 2 |
| | mm | 10 | 15 | 15 | 15 | 15 | 15 | 25 | 25 | 40 | 50 | 50 | 50 | 50 | 50 |
| ASSEMBLED WEIGHT | lb | 7.0 | 10.0 | 13.5 | 26.0 | 26.0 | 25.0 | 40.0 | 52.5 | 90.5 | 161.5 | 185.5 | 300.0 | 480.0 | 728.0 |
| | kg | 3.2 | 4.5 | 6.1 | 11.8 | 11.8 | 11.3 | 18.1 | 23.8 | 41.0 | 73.2 | 84.1 | 135.9 | 217.5 | 329.9 |
| Flow Coefficient | C _v | --- | --- | --- | --- | 43 | 70 | 110 | 150 | 260 | 400 | 550 | 930 | 1600 | 2100 |

Dimensions and weights are for reference only. When required, request certified drawing.

PRESSURE-TEMP: A216 Gr. WCB & A351 Gr. CF8M Class 300 LB



TESTING: Strainers are individually, hydrostatically tested at 1.5 x the 100 °F rating, rounded off to the next higher 25 PSI measurement.

WORKING PRESSURES & TEMPERATURE - NON-SHOCK

| ANSI 300 lb Class | YS 62-CS | YS 62-SS |
|-----------------------|------------------|-------------------|
| WOG (Water, Oil, Gas) | 740 PSI @ 100 °F | 720 PSI @ 100 °F |
| Saturated Steam | 300 PSI @ 420 °F | 300 PSI @ 420 °F |
| Max Liquid | 400 PSI @ 800 °F | 350 PSI @ 1000 °F |

STANDARD SCREEN SELECTIONS

| Sizes | Water Service | Open Area | Steam | Open Area |
|-----------|---------------|-----------|--------------|-----------|
| 1/2" ~ 4" | 0.062 (1/16) | 37% | 0.033 (1/32) | 28% |
| 5" ~ 12" | 0.125 (1/8) | 40% | 0.045 (3/64) | 36% |

A wide range of optional wire mesh and perforated screens are available.

REFERENCED STANDARDS

| | |
|---------------------------|-------------|
| End Flanges | ANSI B16.5 |
| Shell Wall Thickness | ANSI B16.34 |
| Pressure vs. Temp. Rating | ANSI B16.34 |

Ordering Code: _____ Size: _____

Customer/Project: _____

Inq./P.O. No.: _____

Titan Order No.: _____

Certified By: _____ Date: _____

Engineering Specification Submittal

Titan FCI makes every effort to ensure the information presented on our literature accurately reflects exact product specifications. However, as changes occur, there may short-term differences between actual product specifications and the data on our literature. Titan FCI reserves the right to make specification changes to improve our products without prior notification.

WYE STRAINER • YS 62-CS • YS 62-SS

| Size | Model Number | Description | Drawing No. |
|------|--------------|-------------|-------------|
| | | | |