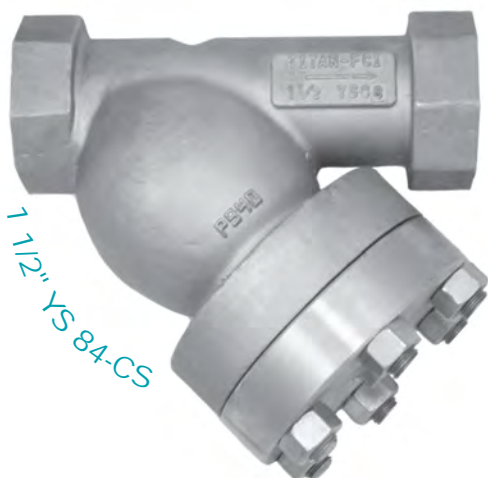


TITAN

WYE STRAINER • THREADED/SOCKET WELD ENDS

Class 1500 lb • Carbon Steel & Stainless Steel



Models:

YS 83-SS & YS 83-CS (Threaded)
 (Stainless Steel) (Carbon Steel)

YS 84-SS & YS 84-CS (Socket Weld)
 (Stainless Steel) (Carbon Steel)

Size Range: 1/2" ~ 3"

WORKING PRESSURES & TEMPERATURE - NON-SHOCK

ANSI 1500 lb Class	YS 83/84-CS	YS 83/84-SS
WOG (Water, Oil, Gas)	3705 PSI @ 100 °F	3600 PSI @ 100 °F
Saturated Steam	1500 PSI @ 603 °F	1500 PSI @ 603 °F
MAX Liquid	2060 PSI @ 800 °F	1750 PSI @ 1000 °F

Features:

- SELF CLEANING TYPE
- EASILY REMOVABLE BOLTED COVER
- HEX END CONNECTIONS FOR FAST, SIMPLE INSTALLATION
- ALL SIZES ARE DUAL RATED FOR 600 AND 1500 LB
- PRECISION MACHINED SCREEN SEAT ENSURES ACCURATE POSITIONING OF SCREEN
- GASKET IS ENCAPSULATED IN A MACHINED GROOVE
- SPIRAL WOUND "CG" STYLE GASKET
- THE "CG" TYPE CAN BE RE-USED - WILL NOT CRUSH
- OPTIONAL SOCKET WELD BLOW-OFF CONNECTION IS AVAILABLE - PLEASE CONSULT FACTORY
NPT BLOW-OFF IS NOT RECOMMENDED FOR HIGH PRESSURE VESSELS
- LARGE OPEN AREA - MINIMUM 2.5 TIMES GREATER THAN CORRESPONDING PIPE SIZE
- ENDS CONFORM TO ASME B16.11
- CARBON STEEL UNITS ARE EPOXY PAINTED

Heavy Duty, High Quality Castings Ideal For High Pressure, High Temperature Petrochemical and Industrial Applications



TITAN FLOW CONTROL
LUMBERTON, NC USA

WYE STRAINER

THREADED ENDS

YS 83-CS (Carbon)

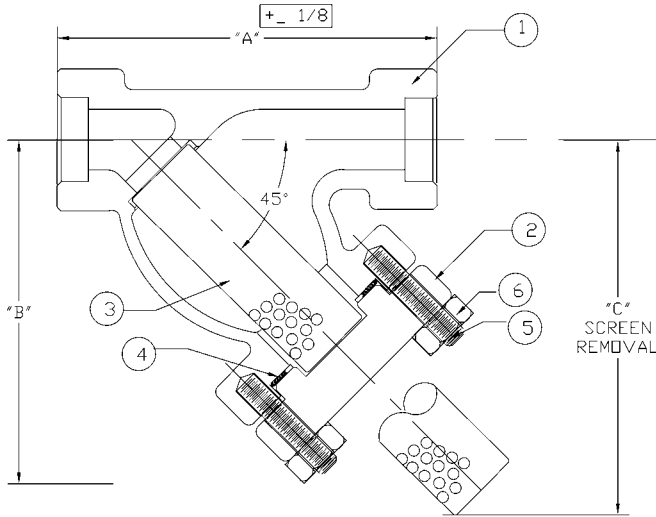
YS 83-SS (Stainless)

SOCKET WELD ENDS

YS 84-CS (Carbon)

YS 84-SS (Stainless)

ANSI Class 1500 lb



BILL OF MATERIALS			
No.	PART	YS 83-CS & YS 84-CS	YS 83-SS & YS 84-SS
1	Body	ASTM A216 Gr. WCB	ASTM A351 Gr. CF8M
2	Cover	ASTM A216 Gr. WCB	ASTM A351 Gr. CF8M
3	Screen*	304 Stainless Steel	304 Stainless Steel
4	Gasket*	304 SS Spiral Wound	304 SS Spiral Wound
5	Studs	ASTM A193-B16	ASTM A193 B8 T304SS
6	Nuts	ASTM A194 Gr4	ASTM A194 Gr8 T304SS

*Recommended spare parts

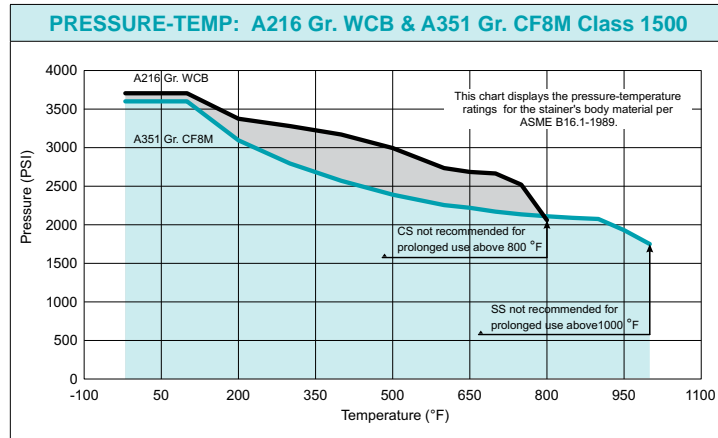
Notes:

- A wide range of optional gasket material available, consult factory.
- Strainers are also available in many optional materials such as LCB, WC6, WC9, 316L, Alloy 20, and Monel.
- Threaded End ASME/ANSI B16.11
Threaded Ends Conform to ANSI B1.20.1
Socket Weld End ASME/ANSI B16.11

DIMENSIONS:

SIZE	in	1/2	3/4	1	1 1/4	1 1/2	2	2 1/2	3
	mm	15	20	25	32	40	50	65	80
A DIMENSION FACE TO FACE	in	3.94	4.25	6.00	8.37	8.37	9.31	12.00	12.00
	mm	101	108	153	213	213	237	305	305
B DIMENSION CTR. LINE TO BOTTOM	in	3.00	3.75	5.75	5.50	5.50	9.25	10.50	10.50
	mm	77	96	147	140	140	235	267	267
C DIMENSION SCREEN REMOVAL	in	4.25	5.25	7.00	8.00	8.00	11.00	16.00	16.00
	mm	108	134	178	204	204	280	407	407
D DIMENSION BLOW-OFF (600 lb Units Only)	in	3/8	1/2	1/2	1/2	1/2	1/2	1	1
	mm	10	15	15	15	15	15	25	25
ASSEMBLED WEIGHT	lb	4.5	7.0	9.0	25.0	25.0	38.0	96.0	92.0
	kg	2.0	3.2	4.1	11.3	11.3	17.2	43.5	41.7
Flow Coefficient	C _v	9	18	30	45	60	100	130	170

*Dimensions are for reference only. When required, request certified drawings.



TESTING: Strainers are individually, hydrostatically tested at 1.5 x the 100 °F rating, rounded off to the next higher 25 PSI measurement .

WORKING PRESSURES & TEMPERATURE - NON-SHOCK

ANSI 1500 lb Class	YS 83/84-CS	YS 83/84-SS
WOG (Water, Oil, Gas)	3705 PSI @ 100 °F	3600 PSI @ 100 °F
Saturated Steam	1500 PSI @ 603 °F	1500 PSI @ 603 °F
Max Liquid	2060 PSI @ 800 °F	1750 PSI @ 1000 °F

STANDARD SCREEN SELECTIONS

Sizes	Water Service	Open Area	Steam	Open Area
1/2" to 3"	1/16 (.0625)	37 %	1/32 (.0312)	28 %

A wide range of optional wire mesh and perforated screens are available.

REFERENCED STANDARDS

Design	ASME/ANSI B16.11
Shell Wall Thickness	ASME/ANSI B16.34
Pressure vs. Temp. Rating	ASME/ANSI B16.34

Ordering Code: _____ Size: _____

Customer/Project: _____

Inq./P.O. No.: _____

Titan Order No.: _____

Certified By: _____ Date: _____

Engineering Specification Submittal

Titan FCI makes every effort to ensure the information presented on our literature accurately reflects exact product specifications. However, as changes occur, there may short-term differences between actual product specifications and the data on our literature. Titan FCI reserves the right to make specification changes to improve our products without prior notification.

WYE STRAINER • YS 83-CS & YS 83-SS • YS 84-CS & YS 84-SS

Size	Model Number	Description	Drawing No.