


TITAN
TITAN FLOW CONTROL, INC.
Wafer Style Mini-Check, Guided Disc Design


Model CV70

Sizes 1/2" thru 3"
316 Stainless Steel
Class 150 / 300



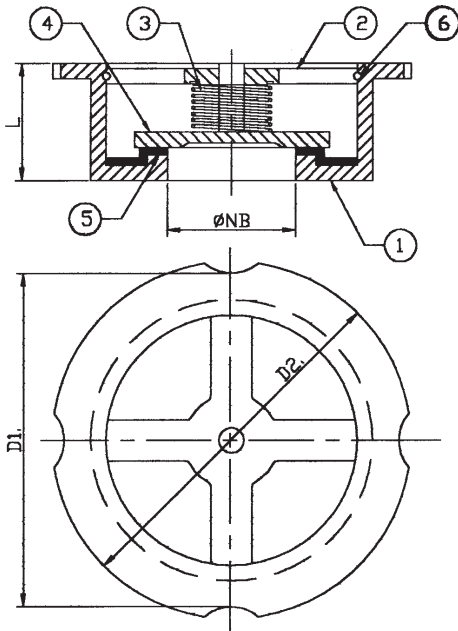
Features:

- Unique Scallop Design Wafer Body. Will fit properly between any ANSI Class 125FF, ANSI Class 250RF, ANSI Class 150RF and ANSI Class 300RF Flanges.
- Engineered for Silent Operation. Titan FCI CV70 Valves Close Quickly and Smoothly to Minimize Hammer Noise.
- Metal to Metal Seats are Precision Lapped to insure Effective Sealing.
- Designed to Function Equally Well in any Position.
- Valve Disc is Guided by Four Ribs to Assure Smooth Operation Without Binding.
- Versatile Design Check Valves can also be used as Low Pressure Relief Valves and Vacuum Breakers.

*Ideal Design Check Valves for Preventing Back Flow in
Non-Pulsating Applications*

TITAN - DESIGN & TECHNICAL DATA:

MODEL CV70



BILL OF MATERIALS / PARTS LIST

No.	Name	Material
1	Body	A351 Gr. CF8M (Cast Stainless Type 316)
2	Yoke	A351 Gr. CF8M (Cast Stainless Type 316)
3	Spring	AISI 304 / AISI or Inconel if specified
4	Disc	A351 Gr. CF8M (Cast Stainless Type 316)
5	Seat	Metal to Metal / Teflon Soft Seat
6	Circlip	AISI 304 / AISI 316

- This series is available in many optional materials such as Alloy 20 and Monel.
- Optional Resilient Seals Available. C/F

TEMPERATURE / PRESSURE RATING

Temperature Range Min. -20°F (-30°C) to Max +750°F (+400°C)
Pressure Class: 150 ANSI class and 300 ANSI Class Flange Standard

Operating Temperature		Max. Operating Temperature	
°F	°C	PSI	BARS
250	120	600	40
390	200	500	34
480	250	485	33
570	300	470	32
660*	350*	455	31

* For Temperatures above 660°F (350°C), Request Inconel Spring.

INSTALLATION:

Valve is designed for single flange supported installation and will operate equally well in any position. Cracking pressure is extremely low, (approximately 1/4 psi).

GENERAL APPLICATIONS

- Chemical-Petrochemical
- Pharmaceutical • Steam
- Marine • Industrial
- High Temperature

TEST PRESSURE BAR

Seat Test	40 Bar	590 PSI
Shell Test	60 Bar	890 PSI
Each Valve is Hydrostatically Tested		

TECHNICAL NOTES:

1. Dimension L is certified to confirm to DIN 3230 and ANSI Class 300.
2. Testing Standard - API 598
3. End Connection - Wafer End to Mount Between ANSI-B 16.5 Flanges.
4. Flange Finish - Serrated Finish Ra 125 To 250 mu.
5. The maximum permissible leakage 3 3/cm /mim/in. for normal size as per API-598.

DIMENSIONS

SIZE	In	1/2	3/4	1	1 1/4	1 1/2	2	2 1/2	3
	m m	15	20	25	32	40	50	65	80
L	In	0.669	0.787	0.905	1.102	1.102	1.574	1.811	1.968
	m m	17	20	23	28	32	40	46	50
D1	In	1.692	2.086	2.48	2.992	3.346	3.74	4.528	5.196
	m m	43	53	63	76	85	95	115	132
D2	In	1.968	2.362	2.756	3.189	3.583	4.173	4.961	5.551
	m m	50	60	70	81	91	106	126	141
WEIGHT:									
	Lbs.	0.39	0.44	0.55	1.1	1.54	2.86	3.75	6.17
	Kg.	0.18	0.2	0.25	0.5	0.7	1.3	1.7	2.8
Cv:									
		8	10	25	33	40	60	70	150