

# Series LM Carbon Steel

## Threaded End Connection

- Lever Operated Ball Valve
- 3000 PSI WP
- 1/4" Through 1"
- Bolted Body Construction

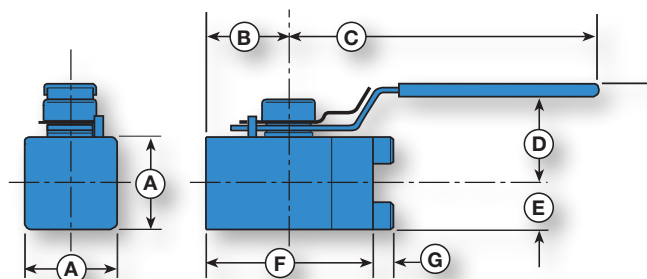
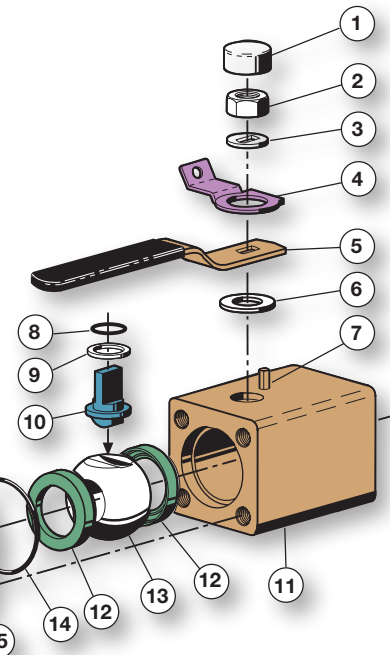
- Multi-Seal Seats
- 316 Stainless Steel Ball and Stem Standard
- Locking Device Standard
- Maintenance Free Sealing



## Material Description

ITEM	PART NAME	MATERIAL (STANDARD)	MATERIAL (NACE)
1	Weather Guard	Polyethylene	Polyethylene
2	Stem Nut	Carbon Steel	Carbon Steel
3	Spacer	Carbon Steel	Carbon Steel
4	Lock Plate	Carbon Steel	Carbon Steel
5	Handle*	Carbon Steel	Carbon Steel
6	Stem Washer	Acetal	Acetal
7	Stop Pin	Carbon Steel	Carbon Steel
8	Stem O-Ring	Buna-N	Fluorocarbon
9	Stem Seal	TFE	TFE
10	Stem	316 Stainless Steel	316 Stainless Steel
11	Body	AISI 1215	AISI 1018
12	Ball Seat	Nylon (TFE Optional)	Nylon (TFE Optional)
13	Ball	316 Stainless Steel	316 Stainless Steel
14	Body Seal	Buna-N	Fluorocarbon
15	End Adapter	AISI 1215	AISI 1018
16	Body Bolts	ASTM A193 B7M	ASTM A193 B7M

\* Handle and lock device are standard on all Series LM Ball Valves.



## Dimensional Data

SIZE	CATALOG NUMBER		PORT	A	B	C	D	E	F	G	LBS.	Cv
	STANDARD TRIM 316 SS BALL & STEM	NACE TRIM 316 SS BALL & STEM										
.25x.37x.25	LM-02362	LM-02362-N	.37	1.25	1.12	3.5	1.62	.62	2.25	.25	1	-
.50x.37x.50	LM-05361	LM-05361-N	.37	1.25	1.12	3.5	1.62	.62	2.25	.25	1	6
.75x.75x.75	LM-07362	LM-07362-N	.75	2	1.81	4.87	2.25	1	3.62	.37	3.5	-
1x.75x1	LM-10361	LM-10361-N	.75	2	1.81	4.87	2.25	1	3.62	.37	3.5	30

# BALON

3245 S. Hattie • Oklahoma City, Oklahoma 73129 • Telephone: (405) 677-3321 • Fax: (405) 677-3917  
e-mail: [balon@balon.com](mailto:balon@balon.com) • [www.balon.com](http://www.balon.com)